

## ORIGINAL ARTICLE

Breast cancer risk in neurofibromatosis type 1 is a function of the type of *NF1* gene mutation: a new genotype-phenotype correlation

Ian M Frayling,<sup>1,2</sup> Victor-Felix Mautner,<sup>3</sup> Rick van Minkelen,<sup>4</sup> Roope A Kallionpää,<sup>5</sup> Safiye Aktaş,<sup>6</sup> Diana Baralle,<sup>7</sup> Shay Ben-Shachar,<sup>8</sup> Alison Callaway,<sup>9</sup> Harriet Cox,<sup>10</sup> Diana M Eccles,<sup>7</sup> Salah Ferkal,<sup>11</sup> Holly LaDuca,<sup>12</sup> Conxi Lázaro,<sup>13</sup> Mark T Rogers,<sup>1,2</sup> Aaron J Stuenkel,<sup>12</sup> Pia Summerour,<sup>12</sup> Ali Varan,<sup>14</sup> Yoon Sim Yap,<sup>15</sup> Ouidad Zehou,<sup>16</sup> Juha Peltonen,<sup>5</sup> D Gareth Evans,<sup>17,18</sup> Pierre Wolkenstein,<sup>19</sup> Meena Upadhyaya<sup>1</sup>

► Additional material is published online only. To view, please visit the journal online (<http://dx.doi.org/10.1136/jmedgenet-2018-105599>).

For numbered affiliations see end of article.

**Correspondence to**

Dr Ian M Frayling, Institute of Medical Genetics, University Hospital of Wales, Cardiff CF14 4XW, UK; [FraylingIM@cardiff.ac.uk](mailto:FraylingIM@cardiff.ac.uk)

Received 17 July 2018  
Revised 30 October 2018  
Accepted 15 November 2018  
Published Online First 10 December 2018

**ABSTRACT**

**Background** Neurofibromatosis type 1 (NF1) predisposes to breast cancer (BC), but no genotype-phenotype correlations have been described.

**Methods** Constitutional *NF1* mutations in 78 patients with NF1 with BC (NF1-BC) were compared with the *NF1* Leiden Open Variation Database (n=3432).

**Results** No cases were observed with whole or partial gene deletions (HR 0.10; 95% CI 0.006 to 1.63; p=0.014, Fisher's exact test). There were no gross relationships with mutation position. Forty-five (64.3%; HR 6.4–83) of the 70 different mutations were more frequent than expected (p<0.05), while 52 (74.3%; HR 5.3–83) were significant when adjusted for multiple comparisons (adjusted p≤0.125; Benjamini-Hochberg). Higher proportions of both nonsense and missense mutations were also observed (adjusted p=0.254; Benjamini-Hochberg). Ten of the 11 missense cases with known age of BC occurred at <50 years (p=0.041). Eighteen cases had *BRCA1/2* testing, revealing one *BRCA2* mutation.

**Discussion** These data strongly support the hypothesis that certain constitutional mutation types, and indeed certain specific variants in *NF1* confer different risks of BC. The lack of large deletions and excess of nonsenses and missenses is consistent with gain of function mutations conferring risk of BC, and also that neurofibromin may function as a dimer. The observation that somatic *NF1* amplification can occur independently of *ERBB2* amplification in sporadic BC supports this concept. A prospective clinical-molecular study of NF1-BC needs to be established to confirm and build on these findings, but regardless of *NF1* mutation status patients with NF1-BC warrant testing of other BC-predisposing genes.

**INTRODUCTION**

Neurofibromatosis type 1 (NF1) is an autosomal dominantly inherited tumour predisposition syndrome caused by constitutional mutations in the *NF1* gene, which is diagnosed clinically according to established criteria.<sup>1</sup> It has variable expressivity, age-related penetrance and a prevalence of 1/2000–1/3500.<sup>2,3</sup> The *NF1* gene has 61 exons (4 of which are alternatively spliced) and is responsible

for the expression of the 2818 amino acid protein neurofibromin, which acts as a tumour suppressor. Consistent with Knudson's two-hit hypothesis, in the tumours of patients with NF1 with heterozygous constitutional mutations the wild-type allele is inactivated by somatic mutation. Neurofibromin is a key negative regulator of the Ras signalling pathway and is a Ras-specific GTPase-activating protein (GAP) with sequence and structural homologies to the GAP superprotein family, including a GAP-related domain (GRD).<sup>4</sup> Also recognised, but less well characterised, are cysteine-rich/serine-rich (CSRSD), tubulin binding, Sec14 homology-like, pleckstrin homology-like and syndecan-2 binding domains (see online supplementary table 1S).

As the mutations that cause NF1 vary in size from large deletions of >1 Mbp to single bp substitutions in any of the exons, so reported detection rates vary, from 60% to 95% depending on the techniques and tissue source.<sup>1,5</sup> Point mutations are observed in all exons and, typical of a tumour suppressor gene, are mostly nulling or protein truncating, while a minority (9.4%–15%) are missense.<sup>5,6</sup>

NF1 predisposes to many tumour types, both benign and malignant, including breast cancer (BC). BC in NF1 (NF1-BC) usually occurs in women, but has been reported in males, both bilaterally and at a young age.<sup>7–9</sup> That there is an increased risk of developing BC in NF1, and in particular that this risk is greater under the age of 50 years, has now been confirmed in a number of studies, with risks of NF1-BC to age 50 years of 7.8%–8.4%, compared with 2% in the general population.<sup>8,10</sup> While studies providing age-corrected standardised incidence ratios (SIR) consistently show an increased risk under age 50 years (95% CI 4.0 to 8.8), the most recent also gives an increased SIR over age 50 years (2.0; 95% CI 1.2 to 3.1), consistent with the non-significant estimate published by Wang *et al*.<sup>11,12,14</sup> (table 1). In addition, two studies have reported increased mortality and unfavourable prognostic factors with NF1-BC.<sup>8,15</sup> So, BC tends to occur at a younger age in NF1, and is more malignant.

Genotype-phenotype correlations are well described in tumour-predisposing conditions.



© Author(s) (or their employer(s)) 2019. No commercial re-use. See rights and permissions. Published by BMJ.

**To cite:** Frayling IM, Mautner V-F, van Minkelen R, *et al*. *J Med Genet* 2019;**56**:209–219.

**Table 1** Summary of studies giving standardised incidence ratios (SIR) of female breast cancer (C50) in NF1

| Study                                | Cohort size | Median follow-up (years) | Total person years of follow-up | SIR (95% CI)         |                      |                       |
|--------------------------------------|-------------|--------------------------|---------------------------------|----------------------|----------------------|-----------------------|
|                                      |             |                          |                                 | Overall              | <50 years            | ≥50 years             |
| Walker <i>et al</i> <sup>14</sup>    | 227         | 13.6                     | 5705                            | 1.87 (0.61 to 4.37)  | 4.02 (1.1 to 10.3)   | 0.60 (0.02 to 3.33)   |
| Sharif <i>et al</i> <sup>10</sup>    | 304         | 17.8                     | 5411                            | 3.5 (1.9 to 5.9)     | 4.9 (2.4 to 8.8)     |                       |
| Wang <i>et al</i> <sup>11</sup>      | 76          | –                        | –                               | 5.2 (2.4 to 9.8)     | 8.8 (3.2 to 19.2)    | 2.8 (0.6 to 8.2)      |
| Madanikia <i>et al</i> <sup>12</sup> | 126         | –                        | –                               | 2.68 (0.68 to 7.29)* | 4.41 (1.12 to 12.0)* | 0.94 (0.047 to 4.65)* |
| Seminog and Goldacre <sup>13</sup>   | 6739        | '~6'                     |                                 | 2.3 (1.7 to 2.9)     |                      |                       |
| Uusitalo <i>et al</i> <sup>8</sup>   | 1404        | 13.4                     | 20248                           | 2.82 (1.92 to 4.00)  | 5.1 (2.9 to 8.1)†    | 2.0 (1.2 to 3.1)†     |

\*Adjusted for race, NF1 prevalence and date of diagnosis.

†Calculated using Poisson regression from the published observed and expected numbers. NF1, neurofibromatosis type 1.

However, while it has been difficult to establish genotype-phenotype correlations in NF1 some associations have been shown. Patients with large deletions encompassing *NF1* and 13 flanking genes ('*NF1* microdeletions'), tend to exhibit a more severe phenotype including learning difficulties and an increased probability of malignant peripheral nerve sheath tumours (MPNST), while an absence of cutaneous neurofibromata is seen with two particular mutations: an in-frame deletion (*NF1* c.2970\_2972del p.Met992del) and a missense (MS; p.Arg1809Cys).<sup>16–20</sup> A high incidence of Noonan syndrome features has been reported in patients with NF1 with missense (MS) mutations at codon 1809, and MS mutations of codons 844–848, that is, within the CSRD, have recently been found to cause a more severe NF1 phenotype including MPNSTs, OPGs and malignant neoplasms in general.<sup>18 21 22</sup> Patients with spinal neurofibromas have been found to be more likely to have MS or splice site (SS) mutations and those with optic pathway gliomas are more likely to harbour mutations in the 5' third of *NF1*.<sup>23 24</sup> While these genotype-phenotype relationships have been found with constitutional mutations, less has been described on somatic *NF1* mutations in BC, but a recent review has shown that in sporadic cancers with somatic *NF1* mutations BC stands out as the only major cancer type in which amplification of *NF1*, so gain of function, is as commonly seen as loss-of-function mutations.<sup>25</sup> It is also notable that compared with benign neurofibromas large deletions predominate as the somatic mutation observed in MPNSTs and are more likely to extend into 17p (to include the *TP53* locus).<sup>26 27</sup>

Therefore, our aim was to explore potential *NF1* genotype-phenotype correlations regarding the risk of BC in NF1, which might aid in clinical care including counselling and, potentially, surveillance or treatment options. Hence, through a worldwide collaboration, we ascertained a set of 78 unrelated NF1-BC cases with defined constitutional *NF1* mutations.

## METHODS

NF1-BC inclusion criteria were: a clinical diagnosis of NF1 (according to NIH criteria), a defined constitutional *NF1* mutation and BC at any age. Information was sought on NF1-associated features, the age at BC diagnosis and histological type, other tumours and whether the patient had any other genes tested, but these were not essential.

The constitutional *NF1* mutations in the NF1-BC set were determined by standard techniques: direct sequencing of gDNA or cDNA, with testing for microdeletions and intragenic CNV by a combination of MLPA (Multiplex Ligation-dependent Probe Amplification) and array CGH, and defined according to the reference sequence hg19:NM\_000267.3.

Reference data on constitutional *NF1* mutations were obtained from the *NF1* Leiden Open Variation Database (LOVD; accessed 23 April 2018).<sup>28</sup> For variants with >1 pathogenicity classification, the more pathogenic was used. Variants not considered pathogenic or probably pathogenic, that is, classes 1–3, were then excluded.

The predicted effect of any given mutation was then defined according to the types in the LOVD, that is, NS (nonsense), FS (frameshift), SS (splicing affected), MS (missense), ID (small deletion/duplications of up to 50 codons; in-frame deletions/duplications; indels), LD (large deletions) or OT (others, including start codon mutations). Care was taken in interpretation of the effect of mutations on the protein as, in particular, some putative MS mutations may also cause splicing abnormalities.<sup>5 29</sup> In instances where there was >1 predicted effect, then MS/SS or NS/SS or SS/any were called as SS, and NS/FS as FS. Finally, 10 of the NF1-BC cases were found to have been reported to the LOVD and were therefore excluded from the LOVD set, making n=3432.

Incidence rates of BC in *BRCA1/2* and *TP53* mutation carriers, and the UK population (ICD-10: C50; 2009–2011) were obtained from published sources.<sup>30–32</sup> The statistical significance of associations was determined using Fisher's exact test, two-tailed given no prior alternative (<http://www.langsrud.com/stat/fisher.htm>), with adjustment for multiple comparisons using the p value plot method of Schweder and Spjøtvoll, and the Benjamini-Hochberg procedure ([www.biostathandbook.com/multiplecomparisons.html](http://www.biostathandbook.com/multiplecomparisons.html)).<sup>33 34</sup>

## RESULTS

### Clinical cases

The NF1-BC cohort (ascertained 2013–2017) consists of 78 unrelated NF1 cases with BC of which 75 were female (table 2). Multiple BCs occurred in six cases (8.3%): bilaterally in one male and three females (two of them metachronously), plus two other cases of synchronous BC in females. Information on type was available for 31 (40%): 29 (94%) were ductal, 2 (6%) were lobular.

Eighteen NF1-BC cases had undergone testing of *BRCA1/2*, of which seven had also had *TP53* analysis. One (#69; 5.6%) had previously been found to have *BRCA2* c.5213\_5216del p.Thr1738Ilefs\*2 in combination with *NF1* c.6792C>Gp. Ala2253\_Lys2286del.<sup>35</sup> This case was not excluded as, first, the penetrance of pathogenic variants in *BRCA2* as BC at age 38 is <20%, and so it could not be assumed that this was the sole reason for this patient's BC, and, second, to exclude it might risk not finding an important association given the rarity of NF1-BC cases.<sup>36</sup>

Table 2 Clinical and molecular details of patients with NF1 and breast cancer

| Case | Gender | NF1 mutation       |                    |                              | Breast cancer |             |                   | Other tumour/s*                  |
|------|--------|--------------------|--------------------|------------------------------|---------------|-------------|-------------------|----------------------------------|
|      |        | cDNA               | mRNA               | Protein                      | Effect†       | Age (years) | Type†*            |                                  |
| #01  | F      | c.28dup            | r.(?)              | p.Val10Glyfs*28              | FS            | 34          | D                 |                                  |
| #02  | F      | c.288+1dup         | r.(?)              | p.Gln97Alafs8*               | SS            | 55          | D                 |                                  |
| #03  | F      | c.[334C>B34C>T]    | r.334C>U           | p.Gln112*                    | NS            | –           | –                 |                                  |
| #04  | F      | c.479+5G>T         | r.(?)              | p.?                          | SS            | 51          | D                 |                                  |
| #05  | F      | c.499_502del       | r.499_502del       | p.Cys167Glnfs*10             | FS            | 29.8        | –                 | Astrocytoma (25 years before BC) |
| #06  | F      | c.603dup           | r.(?)              | p.Lys202*                    | NS            | –           | –                 |                                  |
| #07  | F      | c.663G>A           | r.(?)              | p.Trp221*                    | NS            | 51          | L                 |                                  |
| #08  | F      | c.888+1G>A         | r.731_888del158    | p.?                          | SS            | 55.3        | D                 | Sarcoma (arm), melanoma          |
| #09  | F      | c.889-2A>G         | r.(?)              | p.?                          | SS            | 60          | D                 |                                  |
| #10  | F      | c.1070T>C          | r.(?)              | p.Leu357Pro                  | MS            | 43.4        | –                 |                                  |
| #11  | F      | c.1139T>C          | r.(?)              | p.Leu380Pro                  | MS            | 40          | –                 | pNF                              |
| #12  | F      | c.1148dup          | r.(?)              | p.Cys383Trpfs*13             | FS            | 36          | D                 |                                  |
| #13  | F      | c.1246C>T          | r.1246C>U          | p.Arg416*                    | NS            | –           | –                 |                                  |
| #14  | F      | c.1261-1G>T        | r.(?)              | p.?                          | SS            | 34          | –                 |                                  |
| #15  | F      | c.1318C>T          | r.1318C>U          | p.Arg440*                    | NS            | 38          | –                 | Fibrosarcoma (38 years)          |
| #16  | F      | c.1318C>T          | r.1318C>U          | p.Arg440*                    | NS            | 32          | D                 |                                  |
| #17  | F      | c.1466A>G          | r.1466_1527del62   | p.Tyr489*                    | NS            | –           | –                 |                                  |
| #18  | F      | c.1466A>G          | r.1466_1527del62   | p.Tyr489*                    | NS            | 44          | D (ER-/PR-/HER2+) | pNF, MPNST                       |
| #19  | F      | c.1527+2T>C        | r.(?)              | p.?                          | SS            | –           | –                 | Ovarian cancer                   |
| #20  | F      | c.1541del          | r.1541delA         | p.Gln514AArgfs*12            | FS            | 54          | D                 | Glomus tumour                    |
| #21  | F      | c.1607C>G          | r.(?)              | p.Ser536*                    | NS            | 65          | D (ER+/PR-/HER2-) | MPNST, optic glioma              |
| #22  | F      | c.1683G>A          | r.(?)              | p.Trp561*                    | NS            | 54          | Bill              |                                  |
| #23  | F      | c.1713G>A          | r.(?)              | p.Trp571*                    | NS            | 30          | –                 | MPNST                            |
| #24  | M      | c.1742_1743insA    | r.(?)              | p.(Cys582Leufs*6)            | FS            | 40.7, 60.3  | Bill              |                                  |
| #25  | F      | c.1749delinsCA     | r.(?)              | p.Lys583Asnfs*5              | FS            | 76          | –                 |                                  |
| #26  | F      | c.1882del          | r.(?)              | p.Tyr628Thrfs*3              | FS            | 47, 51      | D, D              |                                  |
| #27  | F      | c.1885G>A          | r.1846_1886del41   | p.(Gly629Arg, Gln616Glyfs*4) | SS            | 48          | –                 |                                  |
| #28  | F      | c.2125T>C          | r.(?)              | p.(Cys709Arg)                | MS            | 42          | –                 |                                  |
| #29  | F      | c.2251G>A          | r.(?)              | p.(Gly751Arg)                | MS            | 48          | –                 | Mother NF1-BC 42 years           |
| #30  | F      | c.2288T>C          | r.(?)              | p.(Leu763Pro)                | MS            | 38.9        | –                 |                                  |
| #31  | F      | c.2509T>A          | r.(?)              | p.(Trp837Arg)                | MS            | 29          | –                 |                                  |
| #32  | F      | c.2540T>C          | r.2540U>C          | p.(Leu847Pro)                | MS            | 39          | D (ER+/PR+/HER2+) | MPNST                            |
| #33  | M      | c.2540T>C          | r.2540U>C          | p.(Leu847Pro)                | MS            | 73.7        | –                 |                                  |
| #34  | F      | c.2619dup          | r.(?)              | p.Lys874*                    | NS            | 47          | D                 |                                  |
| #35  | F      | c.2622_2623insA    | r.(?)              | p.Gly875AArgfs*31            | FS            | 50          | –                 |                                  |
| #36  | F      | c.2991-1G>C        | r.(?)              | p.?                          | SS            | 50          | D                 |                                  |
| #37  | F      | c.3046dup          | r.(?)              | p.Cys1016Leufs*5             | FS            | –           | Bill              | Melanoma, insulinoma             |
| #38  | F      | c.3158C>G          | r.(?)              | p.Ser1053*                   | NS            | –           | –                 |                                  |
| #39  | F      | c.3410_3411delinsC | r.3410_3411delinsC | p.Arg1137Thrfs*5             | FS            | 57          | –                 | pNF                              |

Continued

**Table 2** Continued

| Case | Gender | NF1 mutation          |                   | Breast cancer                       |         |             | Other tumour/s*                       |
|------|--------|-----------------------|-------------------|-------------------------------------|---------|-------------|---------------------------------------|
|      |        | cDNA                  | mRNA              | Protein                             | Effect† | Age (years) |                                       |
| #40  | M      | c.3427C>T             | r.3426_3496del    | p.(His1143Tyr,p.His1143Leufs*28)    | SS      | 58          | Lung cancer                           |
| #41  | F      | c.3494T>C             | r(?)              | p.(Ile1165Thr)                      | MS      | 38          | MPNST                                 |
| #42  | F      | c.3602T>A             | r(?)              | p.Leu1201*                          | NS      | 37          | MPNST                                 |
| #43  | F      | c.3721C>T             | r3721C>U          | p.Arg1241*                          | NS      | 56          |                                       |
| #44  | F      | c.3824del             | r(?)              | p.Phe1275Serfs*10                   | FS      | 40          | D                                     |
| #45  | F      | c.3826C>T             | r3826C>U          | p.Arg1276*                          | NS      | 38          | MPNST                                 |
| #46  | F      | c.3916C>T             | r3916C>U          | p.Arg1306*                          | NS      | 44.5        | L                                     |
| #47  | F      | c.4163T>G             | r(?)              | p.(Met1388Arg)                      | MS      | 44.8        | D                                     |
| #48  | F      | c.4200_4201delinsCATA | r(?)              | p.Tyr1401Ilefs*7                    | FS      | 39.5        | D                                     |
| #49  | F      | c.4269G>C             | r(?)              | p.(Lys1423Asn)                      | SS      | 43, 46      | Melanoma (55 years)                   |
| #50  | F      | c.4274T>G             | r(?)              | p.(Leu1425Arg)                      | MS      | -           | Thyroid adenoma, colon polyps, lipoma |
| #51  | F      | c.4345del             | r(?)              | p.Ser1449Alafs*13                   | FS      | 46          | D                                     |
| #52  | F      | c.4537C>T             | r.4537C>U         | p.Arg1513*                          | NS      | 45          | D                                     |
| #53  | F      | c.4537C>T             | r.4537C>U         | p.Arg1513*                          | NS      | 58          | Phaeochromocytoma                     |
| #54  | F      | c.4719C>G             | r(?)              | p.Tyr1573*                          | NS      | -           |                                       |
| #55  | F      | c.4841_4842insAAT     | r(?)              | p.Tyr1614*                          | NS      | 56          | GIST (61 and 64 years)                |
| #56  | F      | c.4842T>G             | r.4842U>G         | p.Tyr1614*                          | NS      | 46          |                                       |
| #57  | F      | c.4973_4978del        | r(?)              | p.Ile1658_Tyr1659del                | ID      | -           | pNF                                   |
| #58  | F      | c.5242C>T             | r.5242C>U         | p.Arg1748*                          | NS      | 75          | pNF                                   |
| #59  | F      | c.5330del             | r(?)              | p.Gln1777Argfs*4                    | FS      | 57          | pNF (2)                               |
| #60  | F      | c.5426G>T             | r(?)              | p.Arg1809Leu                        | MS      | -           |                                       |
| #61  | F      | c.5747del             | r(?)              | p.Ser1916Leufs*5                    | FS      | -           | pNF, GIST (caecum)                    |
| #62  | F      | c.5861T>C             | r(?)              | p.Leu1954Pro                        | MS      | 32          |                                       |
| #63  | F      | c.6349C>T             | r(?)              | p.Gln2117*                          | NS      | 46.8        | D                                     |
| #64  | F      | c.6575T>G             | r(?)              | p.(Met2192Arg)                      | MS      | -           |                                       |
| #65  | F      | c.6587del             | r(?)              | p.Met2196Argfs*16                   | FS      | 30          |                                       |
| #66  | F      | c.6736A>G             | r.6736_6756del21  | p.(Ile2246Val)/p.Ile2246_Lys2252del | SS      | -           |                                       |
| #67  | F      | c.6789_6792del        | r.6789_6792del4   | p.Tyr2264Thrfs*5                    | FS      | 60          | D                                     |
| #68  | F      | c.6792C>A             | r.6757_6858del102 | p.Ala2253_Lys2286del                | SS      | 49          | D                                     |
| #69  | F      | c.6792C>G             | r.6757_6858del102 | p.Ala2253_Lys2286del                | SS      | 48          | D                                     |
| #70  | F      | c.7365T>G             | r(?)              | p.Tyr2455*                          | NS      | -           |                                       |
| #71  | F      | c.7392T>A             | r(?)              | p.Tyr2464*                          | NS      | -           |                                       |
| #72  | F      | c.7486C>T             | r.7486C>U         | p.Arg2496*                          | NS      | -           |                                       |
| #73  | F      | c.7528C>T             | r.7528C>U         | p.Gln2510*                          | NS      | 58, 61      | D, D (ER+/PR-)                        |
| #74  | F      | c.7846C>T             | r.7846C>U         | p.Arg2616*                          | NS      | 37          | MPNST                                 |
| #75  | F      | c.7846C>T             | r.7846C>U         | p.Arg2616*                          | NS      | -           |                                       |

Continued

Table 2 Continued

| Case | Gender | NF1 mutation   |           |                   | Breast cancer |             |        | Other tumour/s* |
|------|--------|----------------|-----------|-------------------|---------------|-------------|--------|-----------------|
|      |        | cDNA           | mRNA      | Protein           | Effect†       | Age (years) | Type†* |                 |
| #76  | F      | c.7846C>T      | r.7846C>U | p.Arg2616*        | NS            | 62          | D      |                 |
| #77  | F      | c.7848_7851dup | r(?)      | p.Leu2618Asnfs*4  | FS            | –           | –      |                 |
| #78  | F      | c.8097del      | r(?)      | p.Lys2699Asnfs*19 | FS            | 39          | D      | Brain (GBM)     |

\*Where known, age of onset (years) in parentheses.

†Where known, ER/PR/Her2 status in parentheses.

‡Case 3 in Yap *et al.*<sup>50</sup>

§Case 6 in Yap *et al.*<sup>50</sup>

BC, breast cancer; Bil, bilateral; D, intraductal; FS, frameshift; GBM, Glioblastoma multiforme; GIST, Gastrointestinal stromal tumour; pNF, Plexiform neurofibroma; ID, in-frame deletion; L, lobular; NF1, neurofibromatosis type 1; NS, nonsense; MS, missense; MPNST, malignant peripheral nerve sheath tumour; SS, splice site.

### Age of onset

The age of onset of the first or only breast cancer diagnosis was known in 59 (75.6%) cases, giving a mean age of onset of 47.1 years (SD 11.2 years) and a median of 46.0 years, with 37 (62.7%) occurring <50 years. The distribution of ages is shown, in combination with other reports of NF1-BC, in comparison to the UK general population and cases with constitutional *BRCA1*, *BRCA2* and *TP53* mutations (figure 1).<sup>8 10 11 14 30–32 37</sup>

### Constitutional mutation type

Comparison of the seven mutation types: NS, FS, SS, MS, ID, LD and OT by pairwise Fisher's exact tests showed that the absence of LD in the NF1-BC set was significant ( $p=0.014$ ) (see online supplementary table 2Sa; online supplementary figure 1S). Applying the Benjamini-Hochberg adjustment procedure for multiple estimates showed that the absence of LD remain significant and the higher proportion of both NS and MS mutations very closely approached significance with borderline adjusted  $p$  values of 0.254 and a false discovery rate of 0.25 (see online supplementary table 2Sa; online supplementary figure 1S)<sup>38</sup>

Regarding the age of onset of BC in relation to mutation type, it was noted that of the 11 MS cases with known age of onset, 10 occurred at <50 years ( $p=0.041$ ; Fisher's exact test). Hence, the analysis was repeated for the 37 cases with BC aged <50 years (see online supplementary table 2Sb). This confirmed the preponderance of MS in younger cases ( $p=0.009$ ), while no excess of NS is seen. However, in cases aged >49 years no effects can be seen, which is probably a function of the diminished power due to only having 22 cases (see online supplementary table 2Sc).

### Constitutional mutation site

#### Overall

NF1-BC mutations showed a similar overall distribution along the whole coding region as the LOVD, although with a modest under-representation between nucleotides 2001–2400 and 6801–7200 (see online supplementary figure 2S).

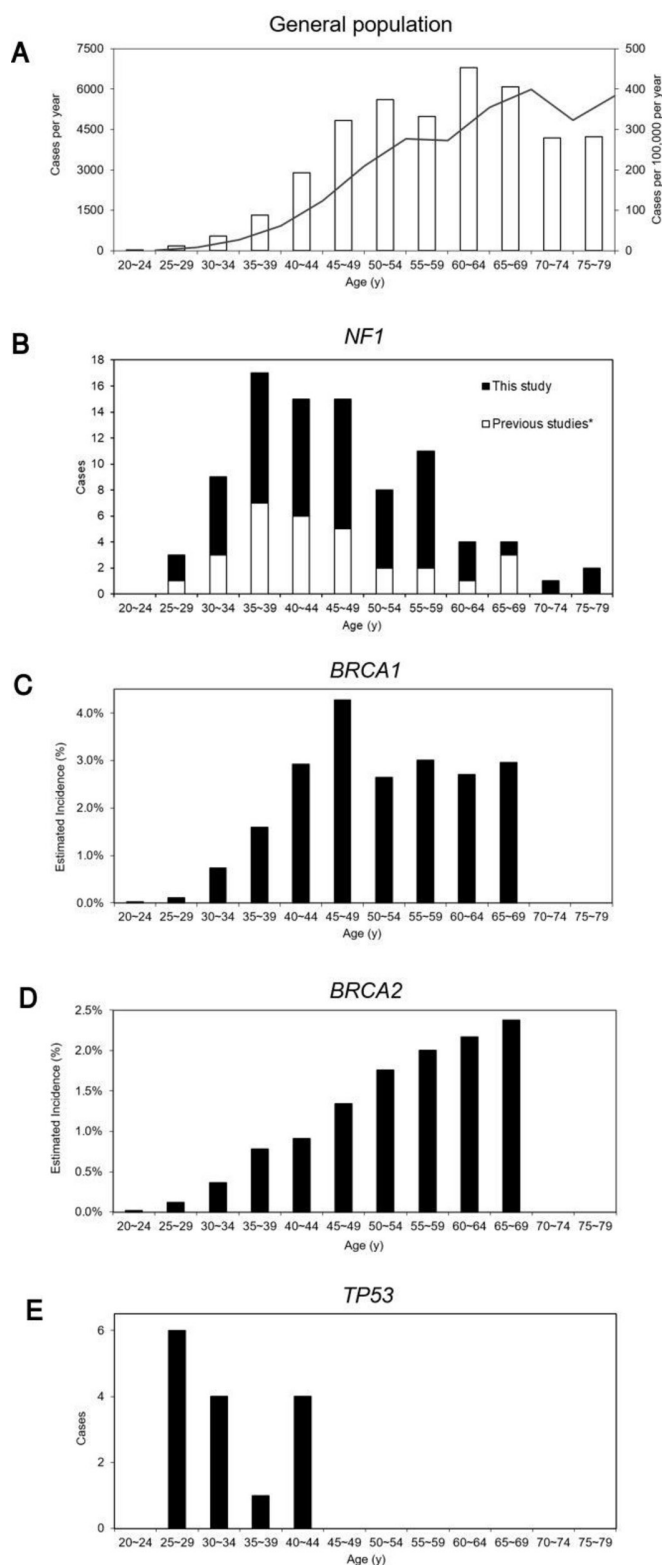
#### Specific domains

There were no significant differences in the distribution of mutations in the domains CSRD, Tub, GRD, Sec14, PH and Syn compared with the reference LOVD set (see online supplementary table 3S). Although 6 (42.8%) of the 14 MS were observed between codons 709 and 847, this was not a significant concentration in the CSRD domain ( $p=0.402$ ; Fisher's exact test) (see online supplementary table 3Sb). Ages of onset of BC in the five females with CSRD MS mutations (#28–#32) were between 29 and 48 years (mean 39.4 years); the sixth case (#33) being a male with BC at age 73.7 years.

### Individual constitutional mutations

Of the 78 NF1-BC cases, 63 (87.5%) had truncating or nulling mutations, comprising 31 NS, 19 FS and 13 SS mutations. The remaining 15 cases (7.6%) comprised 14 MS and 1 ID (which as it only involved two amino acid residues, p.Ile1658\_Tyr1659del, was included in the MS group for overall comparisons). No cases were observed with OT or LD (eg, microdeletions and intragenic CNV).

It was noted that six pairs of cases shared the same putative protein changes: #15 and #16 with p.Arg440\*, #17 and #18 with p.Tyr489\*, #32 and #33 with p.Leu847Pro, #52 and #53 with p.Arg1513\*, #55 and #56 with p.Tyr1614\* and #68 and #69 with p.Ala2253\_Lys2286del, plus a trio of cases



**Figure 1** The age distribution of female breast cancer in the general population and those with constitutional *NF1*, *BRCA1*, *BRCA2* and *TP53* mutations. (A) General population (UK)<sup>32</sup>; □, cases per year; ■, solid line shows cases per 100 000 per year; (B) *NF1*: ■, this study; □, previous studies<sup>8 10 11 14 37</sup>; (C) *BRCA1*<sup>30</sup>; (D) *BRCA2*<sup>30</sup>; (E) *TP53*<sup>31</sup>

(#74–#76) with p.Arg2616\*, all unrelated. Furthermore, the two pairs of cases with p.Tyr1614\* and p.Ala2253\_Lys2286del were seen to be caused by different mutations in each pair:

c.4841\_4842insAAT and c.4842T>G, and c.6792C>A and c.6792C>G, respectively. In addition, 21 (30%) of the 70 different protein changes were not observed in the LOVD. These findings together suggested that the observed frequencies of the mutations in the NF1-BC set were not random. Naturally, common mutations would be expected more often than others, so this was allowed for by calculating the probability of observing each individual mutation in the NF1-BC set given its frequency in the LOVD and plotting the Fisher's exact p values ranked by probability ( $N_p$ ) vs  $1-p$ , as described (figure 2) (see online supplementary table 4S).<sup>34</sup> The resultant plot of the larger values of p thus gave the straight line with a slope estimating the number of true null hypotheses ( $T_0$ ), in this instance 20, corresponding to uncorrected p values of  $\leq 0.09$  and giving a Benjamini-Hochberg adjusted p value threshold of 0.125 (figure 2).<sup>33 34</sup> Hence, 52 of the 70 different mutations observed in the NF1-BC set (74.3%) can be accepted as true associations, that is, related to the occurrence of BC in NF1. The HRs associated with these 52 mutations vary from 83 (95% CI 10.9 to 641) for p.Tyr1614\* ( $p=0.0012$ ; Fisher's exact test) to 5.3 (95% CI 1.4 to 19.9) for p.Arg440\* ( $p=0.090$ ; Fisher's exact test) (see online supplementary table 4Sa).

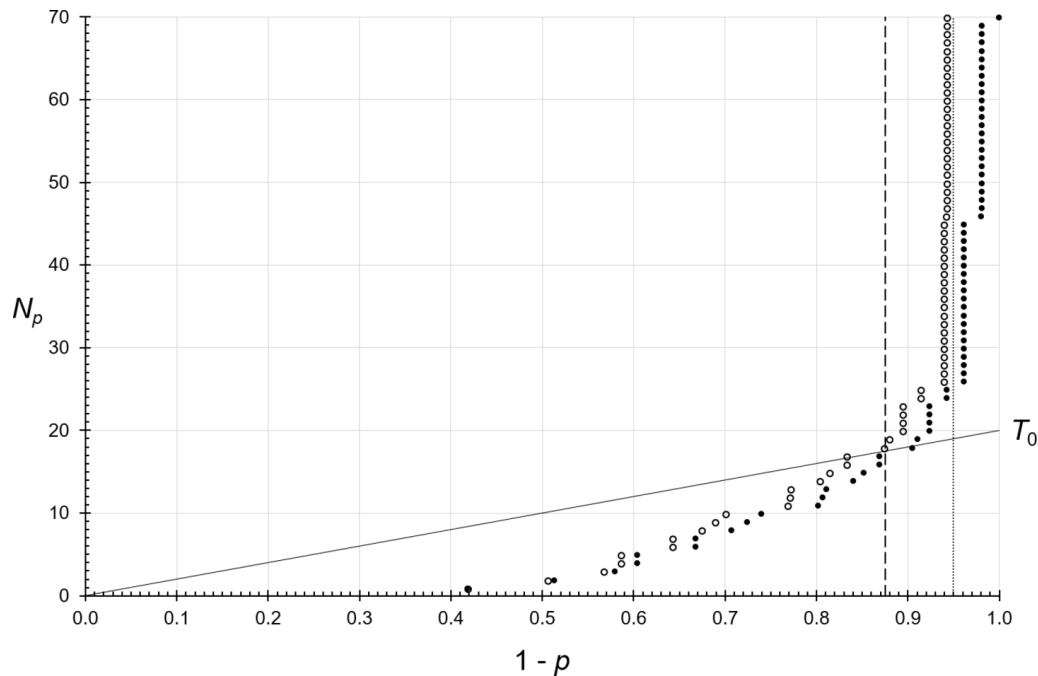
### Individual mutations and age of onset

Given the younger age of BC onset in MS cases, we then looked further at age of onset. In those with mutations with Benjamini-Hochberg adjusted  $p < 0.125$  (ie, significantly enriched), 28/43 (65%) had an age of onset  $< 50$  years (mean 45.6 years; median 44.8 years; range 29–76 years), while in those with  $p > 0.125$ , 9/17 (53%) were  $< 50$  years (mean 50.8 years; median 49 years; range 29.8–76 years), consistent with predisposition to BC by the significantly enriched *NF1* mutations (see online supplementary table 4Sa; t-test of means: two-sample assuming equal variances:  $p(T \leq t)$  one-tail = 0.052). However, it was noted that the mean age of onset in those without significantly enriched mutations (50.8 years) was also low. To explore this age effect, we repeated the analysis on the 37 cases (with 35 different variants) whose age of onset was  $< 50$  years (see online supplementary table 4Sb). This shows that 27 (73%) of these variants can be accepted as true associations ( $p < 0.05$ /Benjamini-Hochberg adjusted  $< 0.125$ ), and moreover that the HRs for these now vary from 299 (95% CI 119 to 7457) for the nine highest ranked variants ( $p=0.010$ ; Fisher's exact test) to 1.8 (95% CI 6.6 to 24.7) for p.Ala2253\_Lys2286del ( $p=0.061$ ; Fisher's exact test).

### DISCUSSION

This large 5-year international study, the first of its kind, has examined possible correlations of *NF1* genotype with BC in 78 unrelated patients with NF1-BC. Although there are no simple gross relationships with mutation position, our findings indicate that the constitutional *NF1* mutations seen in patients with NF1-BC are not random:

1. A complete absence of large or whole gene deletions in patients with NF1-BC, plus evidence of an overall higher proportion of both NS and MS mutations. While patients with NF1 with large or whole gene deletions ('microdeletions') are known to have more severe disease and reduced longevity, and so might be less likely to develop BC, this would have to be of an extreme degree to have significantly biased our findings.
2. A majority (74.3%; 52/70) of the protein changes observed in NF1-BC cases are significantly enriched, that is, are more frequent than expected, being above the  $T_0$  intercept on the



**Figure 2** P value plot of the mutations in neurofibromatosis type 1-breast cancer, as ranked Fisher's exact p values ( $N_p$ ) vs  $1-p$ . Solid points (●)=individual probabilities (Fisher's exact test) with the vertical dotted line indicating  $p=0.05$ ; open points (○)=Benjamini-Hochberg adjusted probabilities, with the solid line intercept indicating  $T_0$ , the number of probable true associations and the vertical dashed line showing the resultant Benjamini-Hochberg adjusted p value threshold of 0.125.

p value plot (figure 2). Moreover, 30% (21/70) have not previously been reported to the *NF1* LOVD.

- Two pairs of patients with *NF1*-BC share the same predicted effects on neurofibromin, but have different mutations at the DNA level (p.Tyr1614\* caused by c.4841\_4842insAAT and c.4842T>G, and p.Ala2253\_Lys2286del caused by c.6792C>A and c.6792C>G). This is reinforced by three recent studies: one of 14 patients with *NF1*-BC in which a pair of cases was found that share a deep intronic splicing mutation (c.1260+1604A>G), and two others reporting *NF1*-BC cases with *NF1* c.2540T>C p.(Leu847Pro).<sup>22 39 40</sup>
- The age of onset in those with significantly enriched mutations (45.6 years) is lower than in those without (50.8 years;  $p=0.052$ ) and 91% (10/11) of MS cases with known age of BC onset occurred <50 years. Although non-significant, the occurrence of 6/14 (42.8%) MS mutations within the CSR is, again, consistent with the other two reports of *NF1*-BC with *NF1* p.(Leu847Pro).<sup>22 39</sup>

Regarding age of onset, any increased risk of BC attributable to certain *NF1* mutations would be expected to manifest more among younger-onset *NF1*-BC cases. As the processes leading to sporadic BC are likely to apply equally to patients with *NF1* as in the general population and the SIR for *NF1*-BC at ages  $\geq 50$  years is approximately 2, no >50% of BCs in this age group would be linked to particular mutations and the rest would have developed BC even if they had no *NF1* mutation. However, among women with *NF1*-BC <50 years, the proportion of cancers associated with the constitutional *NF1* mutation is greater (65% vs 53%). Notwithstanding this, those without significantly enriched mutations also show a low mean age at diagnosis (50.8 years), suggesting that their *NF1* mutations may also somehow lead to increased susceptibility.

This whole body of evidence is consistent with certain constitutional mutation types, and indeed probably certain specific mutations in *NF1* conferring greater or lesser risks of BC, in

the absence of high-penetrance mutations in other BC genes. However, whether on their own or as instances of multiple inherited neoplasia alleles syndrome (MINAS), they provide insight into possible mechanisms.

#### Potential sources of bias

Inherently, there are biases in the ascertainment of all clinical data. The lack of patients with microdeletions (leading to possible reduced longevity) has already been mentioned. However, while patients with *NF1* have on average an 8%–15.8% lifetime risk of an MPNST, and patients with microdeletions have a 16%–26% risk, we can find no quantitative data in the literature on the precise longevity of microdeletion patients. Nonetheless, an approximation can be made by modelling. With a 26% risk of MPNST in patients with *NF1* with LD, then, of the 204 LD cases in the LOVD set, 53 would get MPNST (and it is assumed die), and 151 would live without MPNST surviving long enough to be at risk for BC. Excluding the 53 MPNST cases, there would be 3379 cases in the LOVD set, of which 151 had LD. Comparing this with zero LD in the 78 *NF1*-BC cases, the Fisher's exact test still yields  $p=0.049$ . And this is a conservative estimate, as the risk of MPNST among patients with LD is 16%–26% and patients with other types of mutations can also get MPNST. Thus, the MPNST risk in patients with LD is not sufficient to explain the lack of LD in the current material, although the reduced longevity of patients with LD may cause minor bias.<sup>16 41–45</sup> So, until such time as the longevity of LD patients is precisely described, ideally in a prospective study, the conclusion must stand that LD may be associated with a significantly reduced HR for BC.

Patients with *NF1* with BC may have been more likely to be offered gene testing, but this effect likely occurs in any patient with *NF1* with a more severe or unusual clinical feature and short of a fully prospective randomised trial (probably unfeasible in the setting of a rare condition) is difficult to control for,

although by consideration of gene testing dates in relation to the date of BC diagnosis this may be possible in the future. Although we generally excluded mutations of debateable pathogenicity reported to the LOVD, by selecting only those of classes 4 or 5, there may be some bias in the reporting of mutations to the LOVD, in that they may more often be those which are easier to interpret as pathogenic. However, there is no reason to suspect this applies more or less to patients with NF1 with BC.

For patients with BC onset <50 years (more than half of this cohort, where age of onset was known), less than half had been screened for germline *BRCA1/2* or *TP53* mutations. Hence, undetected high penetrance constitutional mutations, especially in the six subjects with multiple BCs, might have introduced bias. This is difficult to control for in a largely retrospective study in which comprehensive genetic testing has not been carried out, and is one reason for recommending gene panel testing in patients with NF1-BC. However, even if some of these multiple BC cases are due to mutations in other genes, the majority are less likely to be, and in any event they would provide more evidence for MINAS as a factor in NF1-BC.<sup>35</sup>

#### Reasons for the relationship of NF1-BC with mutation type

Clearly, *NF1* mutation type is related to the risk of NF1-BC, but the effect is subtle. The magnitude of the effect due to NS or MS mutations is only sufficient in itself to explain less than 50% of cases, but it does demand explanation. In particular, why might some truncating mutations due to NS, but not FS or SS mutations, raise the risk of BC? How might this then relate to the findings regarding MS mutations, that is, of restricted types and possible concentration within a specific domain, and the fact that no patients with NF1-BC have been observed to have whole or even partial gene deletions?

Large constitutional deletions of tumour suppressor genes, akin to loss of heterozygosity as a somatic event, cause loss of normal protein function. Missense or NS mutations can theoretically cause a change or gain in function, whereas FS and SS mutations mostly result in loss of function as they strongly stimulate nonsense-mediated decay (NMD) of mRNA.<sup>46</sup> Hence, this selective excess of MS and NS mutations suggests that some NS mutations confer a gain of function that may be involved in NF1-BC risk. While NS mutations often stimulate NMD they vary in the extent to which they do this. It is well known that NS mutations in the most 3' exon and within 50~55 bp of the 3' splice site of the penultimate exon of a gene do not stimulate NMD, but recent work has shown the process to be much more complex, involving 38 parameters including the 'last exon' rule.<sup>47</sup> Thus, NS mutations that do not fully stimulate NMD may result in the expression of truncated protein with the potential for a gain of function effect on cellular function. This would also fit with MS mutations being restricted in type and site in NF1-BC, presumably because only certain MS mutations confer the specific changes or gains of function which BC cells find advantageous.

As to the molecular mechanism or mechanisms involved, our genetic findings support the emerging biochemical evidence that neurofibromin acts within the cell as a dimer, which would provide an elegant explanation for our observations.<sup>48 49</sup> Mutations causing loss of normal protein expression, such as whole or partial gene deletions, FS and NS stimulating NMD, would result in a simple halving of neurofibromin activity. However, mutations causing expression of abnormal protein, such as MS and NS that do not stimulate NMD, would result in a greater reduction in normal function, and may have abnormal function

(figure 3). However, it is accepted that this may be more complex in the case of FS variants, some of which may allow full-length mRNA to be produced, sometimes including a MS. Also, we did not differentiate between FS that generate in-frame and out-of-frame message, as the precise effect of any given FS mutation can be complicated, may involve allele-specific changes in expression levels, and differ according to the assays used. Of course, any one variant might confer gain of normal function and/or loss of other function/s, perhaps by acting dominant-negatively. But, gain of tumour-suppressor function may be by downregulating another function, perhaps by upregulating a third, for example, APC,  $\beta$ -catenin and c-Myc, and it is unlikely that all variants will act in the same way, which is supported by the recent finding that expression patterns of neurofibromin in NF1-BC are not consistent.<sup>50 51</sup> Nonetheless, NF1 may thus be similar in this respect to familial adenomatous polyposis, where the tumour suppressor protein APC functions as a dimer, and, moreover, provides an explanation for that disease's variable severity through the resultant constraint by a patient's constitutional mutation on which somatic mutations confer a selectable advantage.<sup>52</sup>

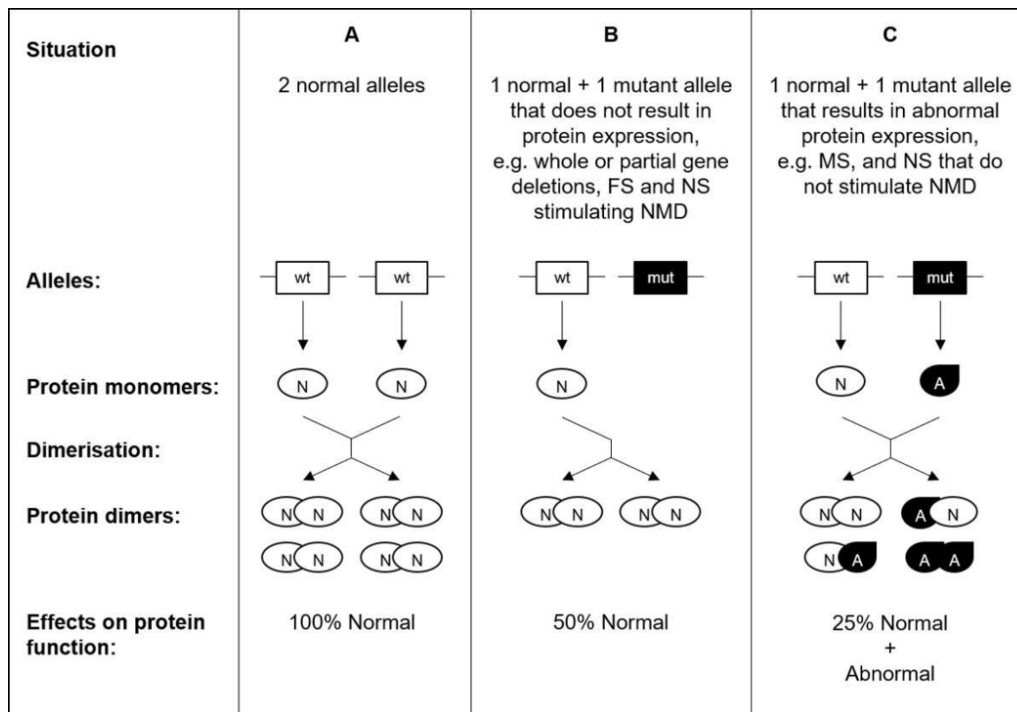
The recent finding that BC stands out among cancer types in being the only one in which amplification of *NF1* is seen frequently as a somatic event also supports the contention that gain or change of function is important as a selectable advantage in BC tumourigenesis.<sup>25 39 53</sup> However, *ERBB2* amplification is a known driver of BC, and so the amplification of *NF1* in sporadic BCs might simply be a function of the two genes being linked on chromosome 17. We therefore analysed data from five studies in the cBioPortal for Cancer Genomics, including the Metabric dataset, and while in 541 cases of BC with changes in *NF1* or *ERBB2* the majority (376, 69.5%) had *ERBB2* amplification, only 9.6% (36/376) had *NF1* amplification and four (1.1%) had homozygous deletions of *NF1* (see online supplementary table S5).<sup>54</sup> In contrast, 36/44 tumours with *NF1* amplification also had *ERBB2* amplification. Clearly, although most BC with *NF1* amplification also have *ERBB2* amplification, most BC with *ERBB2* amplification do not have *NF1* amplification. Therefore, on some occasions, at least, *NF1* gene amplification is likely an independent selectable advantage, and while *NF1* amplification is commonly accompanied by *ERBB2* amplification this does not necessarily imply the *NF1* amplification is a mere passenger.

#### Clinical utility of our findings

If it were possible to identify precisely a subset of *NF1* mutations that confer a raised risk of NF1-BC then that would be clinically useful. While we have identified a group of 52 mutations as probably significantly associated with NF1-BC, it is difficult to single any one out as conferring a clinically significant increased risk of BC, although their individual HRs are all between 5.3 and 148 (95% CI 1.4 to 3669), reinforced by many showing a greater effect <50 years, which the reader may consider sufficient to act on. But, that said, the evidence from this study is adding to others indicating a greater risk of malignancy in general associated with MS mutations involving codon 847.<sup>22</sup>

In contrast, the low risk of BC associated with large *NF1* deletions may be more clinically useful, although that it too needs to be confirmed in other datasets. Given that we ascertained no cases with LD in 78 patients with NF1-BC and 204 cases with LD are reported on the LOVD (5.9% of 3432), then the HR is 0.10 (95% CI 0.006 to 1.63;  $p=0.014$ , Fisher's exact test). It needs to be borne in mind that the upper CI exceeds 1 due to the necessity to add 0.5 to all numbers in the calculation, because one number equals zero, and also that the distribution of the CI





**Figure 3** A diagram schematically illustrating the potential effects of mutations on proteins that function as dimers (A). Mutations that result in non-expression of normal protein from one allele (B) simply result in a reduction of normal function by half. Such mutations include, eg, whole or partial gene deletions, frameshift (FS) and nonsense (NS) stimulating nonsense-mediated decay (NMD). However, with mutations such as missense (MS) and NS that do not stimulate NMD (C), the result is the expression of abnormal protein. Such abnormal monomers result in the formation of normal-abnormal heterodimers and abnormal homodimers, the effect of which is twofold: to reduce normal function by three-quarters as well as confer a gain of abnormal function. This assumes that parameters such as expression levels and binding coefficients are not altered and is necessarily a simplification.

around an HR is heavily skewed to the lower CI. In contrast, Fisher's calculation of the exact probability does not need this internal addition. It is therefore curious that such microdeletion cases appear less likely to develop BC considering *NF1* microdeletion cases have a twofold increased risk of developing MPNSTs.<sup>16 41–45</sup> As *SUZ12* potentiates the effects of *NF1* mutations, however, by amplifying Ras-driven transcription through effects on chromatin, and *SUZ12* is only 0.58 Mb telomeric of *NF1*, it is thus frequently lost in tumours from microdeletion cases. Hence, this may indicate that a reduction in *SUZ12* may protect against NF1-BC.<sup>16 55</sup>

While only 1 out of the 18 NF1-BC cases (5.6%) tested for mutations in other genes had a mutation (in *BRCA2*), nonetheless, because *BRCA1* is linked to *NF1* and cases with both *NF1* and *BRCA1* mutations have been described, then it would be logical and reasonable to test NF1-BC cases for mutations in other BC-predisposing genes, as possible cases of MINAS.<sup>10 35 56</sup> Certainly, it would be unreasonable to assume that a case of NF1-BC was always solely due to the constitutional *NF1* mutation. This, therefore, argues for more extensive genetic testing being offered to those with NF1, for example, in the form of gene panels, and highlights the benefit of such an approach. Vice versa, what value is there in testing *NF1* in all BC cases? One study has reported finding pathogenic or likely pathogenic *NF1* variants in 153 of 108 883 (0.1%) cancer gene panels, of which 4 (3%) were reported not to have any clinical features of NF1.<sup>57</sup> So, for reasons such as mosaicism, phenotype restriction or clinical inattentiveness, the occasional patient may not be diagnosed clinically with NF1 before they are molecularly diagnosed. However, the yield of otherwise undiagnosed NF1 cases from cancer gene panels is exceedingly low at approximately

0.004%. So, whether it is worth including *NF1* on such panels in the absence of clinical features is perhaps a question more for health economics.

### Summary

We have shown that:

- ▶ The type of heritable *NF1* mutation is a determinant of BC risk in NF1. However, this effect does not fully explain the phenomenon of BC in NF1.
- ▶ Particular point mutations, including MS mutations in the CSRSD, may specifically confer an increased risk of BC, and more so at younger age.
- ▶ Patients with NF1 with large or partial gene deletions may have little or perhaps no increased risk of BC.
- ▶ The mechanism of this effect may relate to the degree to which individual mutations result in a change of neurofibromin function and exactly what function/s.
- ▶ There is a reasonable chance a patient with NF1-BC may harbour a mutation in another BC predisposing gene, so testing for constitutional mutations in genes other than *NF1* should be offered.
- ▶ As BC risk in NF1 may be a function of specific mutations conferring gain of function, then, in order to address this hypothesis, and confirm our other findings, a prospective NF1-BC clinical database should be established, combined with comprehensive constitutional and tumour genomic analysis. As the cases in this study not already listed will be deposited in the LOVD, then this could be achieved within the *NF1* LOVD by the simple addition of the dates on which patients were diagnosed with an *NF1* mutation,

and the dates on which tumours are diagnosed. We therefore strongly recommend that all clinicians who care for patients with NF1 submit their data to the LOVD.

#### Author affiliations

<sup>1</sup>Inherited Tumour Syndromes Research Group, Institute of Cancer & Genetics, Cardiff University, Cardiff, UK

<sup>2</sup>All-Wales Medical Genetics Service, Institute of Medical Genetics, University Hospital of Wales, Cardiff, UK

<sup>3</sup>Department of Neurology, University Medical Center Hamburg-Eppendorf, Hamburg, Germany

<sup>4</sup>Clinical Genetics, Erasmus Medical Center, Rotterdam, The Netherlands

<sup>5</sup>Department of Cell Biology and Anatomy, Turun Yliopisto, Turku, Finland

<sup>6</sup>Dokuz Eylül Üniversitesi, İzmir, Turkey

<sup>7</sup>Faculty of Medicine, University of Southampton, Southampton, UK

<sup>8</sup>The Genetic Institute, Tel-Aviv Sourasky Medical Center, affiliated to Sackler Faculty of Medicine, Tel-Aviv University, Tel-Aviv, Israel

<sup>9</sup>Wessex Regional Genetics Laboratory, Salisbury NHS Foundation Trust, Salisbury, UK

<sup>10</sup>Institute of Cancer and Genetics, Cardiff University, Cardiff, UK

<sup>11</sup>Service de Santé Publique, Hôpital Henri Mondor, Créteil, France

<sup>12</sup>Clinical Diagnostics, Amry Genetics Corp, Aliso Viejo, California, USA

<sup>13</sup>Hereditary Cancer Program, Institut Català d'Oncologia, L'Hospitalet de Llobregat, Spain

<sup>14</sup>Hacettepe Üniversitesi Onkoloji Enstitüsü, Ankara, Turkey

<sup>15</sup>Department of Medical Oncology, National Cancer Centre Singapore, Singapore

<sup>16</sup>Hôpital Henri Mondor, APHP University Paris Est Créteil, Créteil, France

<sup>17</sup>Manchester Centre for Genomic Medicine, Central Manchester University Hospitals NHS Foundation Trust, Manchester, UK

<sup>18</sup>Manchester Centre for Genomic Medicine, University of Manchester, Manchester, UK

<sup>19</sup>Immunity Transplantation Infections, Hôpital Henri Mondor, APHP University Paris Est Créteil, Créteil, France

**Correction notice** The article has been corrected since it was published online first. The name of author D Gareth Evans has been corrected.

**Acknowledgements** The authors would like to thank Professor Ludwine M Messiaen for sharing data and advice, as well as Sheila Palmer-Smith, John Watkins and Professors Ros Eeles and David N Cooper for advice and helpful discussions. The authors would like to acknowledge the data generated by the TCGA Research Network: <http://cancergenome.nih.gov/>.

**Contributors** V-FM and MU had the original idea for the study, IMF and MU designed it. IMF sought institutional approval, compiled, checked and analysed the data, managed the study database, computed the results and wrote the initial draft of the manuscript including text, tables and figures. RAK, JP and IMF worked on the statistical analyses. RvM compiles, checks and curates the online NF1 database (LOVD); RvM and IMF shared appropriate data. DGE, JP and MU reviewed the initial draft of the manuscript. IMF, V-FM, RvM, RAK, SA, DB, SB-S, AC, HC, DME, SF, HLD, CL, MTR, AJS, PS, AV, YSY, OZ, JP, DGE, PW and MU all contributed data, critically reviewed study design, interpretation of mutations and results and commented on and approved the final manuscript. IMF submitted the study and is responsible as guarantor for overall content.

**Funding** The authors have not declared a specific grant for this research from any funding agency in the public, commercial or not-for-profit sectors.

**Competing interests** Dr IMF reports support from St Vincent's University Hospital, Dublin, Impact Genetics, Bowmanville, Ontario, Canada and Amry Genetics, Aliso Viejo, California, USA, and Professor GDE reports support from AstraZeneca, both for travel, both outside the submitted work. Professor MU thanks the Ian Owen Fund for support.

**Patient consent for publication** Cardiff and Vale University Health Board approved the study as not requiring specific ethical approval, because it only used anonymous data collected during routine patient care, and hence individual patient consent was not necessary (13/DHD/5637).

**Ethics approval** Cardiff and Vale University Health Board (13/DHD/5637).

**Provenance and peer review** Not commissioned; externally peer reviewed.

**Data sharing statement** NF1 gene variant data not already listed on the public LOVD at <https://databases.lovd.nl/shared/genes/NF1> will be deposited on the LOVD. We welcome submission of further NF1 breast cancer cases to the LOVD to extend the study, and request that submitters contact the corresponding author. Within the limitations of the original retrospective study, as stated in the paper, there are some extra clinical data which can be made available to those contributing more cases.

#### REFERENCES

- Upadhyaya M. Neurofibromatosis type 1: diagnosis and recent advances. *Expert Opin Med Diagn* 2010;4:307–22.
- Gutmann DH, Ferner RE, Listernick RH, Korf BR, Wolters PL, Johnson KJ. Neurofibromatosis type 1. *Nat Rev Dis Primers* 2017;3:17004.
- Huson SM. Recent developments in the diagnosis and management of neurofibromatosis. *Arch Dis Child* 1989;64:745–9.
- Scheffzek K, Ahmadian MR, Wiesmüller L, Kabsch W, Stege P, Schmitz F, Wittinghofer A. Structural analysis of the GAP-related domain from neurofibromin and its implications. *Embo J* 1998;17:4313–27.
- Messiaen LM, Callens T, Mortier G, Beysen D, Vandenbroucke I, Van Roy N, Speleman F, Paepe AD. Exhaustive mutation analysis of the *NF1* gene allows identification of 95% of mutations and reveals a high frequency of unusual splicing defects. *Hum Mutat* 2000;15:541–55.
- Griffiths S, Thompson P, Frayling I, Upadhyaya M. Molecular diagnosis of neurofibromatosis type 1: 2 years experience. *Fam Cancer* 2007;6:21–34.
- Sørensen SA, Mulvihill JJ, Nielsen A. Long-term follow-up of von Recklinghausen neurofibromatosis. Survival and malignant neoplasms. *N Engl J Med* 1986;314:1010–5.
- Uusitalo E, Kallionpää RA, Kurki S, Rantanen M, Pitkaniemi J, Kronqvist P, Härkönen P, Huovinen R, Carpen O, Pöyhönen M, Peltonen S, Peltonen J. Breast cancer in neurofibromatosis type 1: overrepresentation of unfavourable prognostic factors. *Br J Cancer* 2017;116:211–7.
- Wilson CH, Griffith CD, Shrimankar J, Douglas F. Gynaecomastia, neurofibromatosis and breast cancer. *Breast* 2004;13:77–9.
- Sharif S, Moran A, Huson SM, Iddenden R, Shenton A, Howard E, Evans DG. Women with neurofibromatosis 1 are at a moderately increased risk of developing breast cancer and should be considered for early screening. *J Med Genet* 2007;44:481–4.
- Wang X, Levin AM, Smolinski SE, Vigneaun FD, Levin NK, Tainsky MA. Breast cancer and other neoplasms in women with neurofibromatosis type 1: a retrospective review of cases in the Detroit metropolitan area. *Am J Med Genet A* 2012;158A:3061–4.
- Madanikia SA, Bergner A, Ye X, Blakeley JO. Increased risk of breast cancer in women with NF1. *Am J Med Genet A* 2012;158A:3056–60.
- Seminog OO, Goldacre MJ. Risk of benign tumours of nervous system, and of malignant neoplasms, in people with neurofibromatosis: population-based record-linkage study. *Br J Cancer* 2013;108:193–8.
- Walker L, Thompson D, Easton D, Ponder B, Ponder M, Frayling I, Baralle D. A prospective study of neurofibromatosis type 1 cancer incidence in the UK. *Br J Cancer* 2006;95:233–8.
- Evans DG, O'Hara C, Wilding A, Ingham SL, Howard E, Dawson J, Moran A, Scott-Kitching V, Holt F, Huson SM. Mortality in neurofibromatosis 1: in North West England: an assessment of actuarial survival in a region of the UK since 1989. *Eur J Hum Genet* 2011;19:1187–91.
- De Raedt T, Brems H, Wolkenstein P, Vidaud D, Pilotti S, Perrone F, Mautner V, Frahm S, Sciort R, Legius E. Elevated risk for MPNST in *NF1* microdeletion patients. *Am J Hum Genet* 2003;72:1288–92.
- Pinna V, Lanari V, Daniele P, Consoli F, Agolini E, Margiotti K, Bottollo I, Torrente I, Bruselles A, Fusilli C, Ciccadenti A, Bargiacchi S, Trevisson E, Forzan M, Giustini S, Leoni C, Zampino G, Digilio MC, Dallapiccola B, Clementi M, Tartaglia M, De Luca A. p.Arg1809Cys substitution in neurofibromin is associated with a distinctive NF1 phenotype without neurofibromas. *Eur J Hum Genet* 2015;23:1068–71.
- Rojnueangnit K, Xie J, Gomes A, Sharp A, Callens T, Chen Y, Liu Y, Cochran M, Abbott MA, Atkin J, Babovic-Vuksanovic D, Barnett CP, Crenshaw M, Bartholomew DW, Basel L, Bellus G, Ben-Shachar S, Bialer MG, Bick D, Blumberg B, Cortes F, David KL, Destree A, Duat-Rodriguez A, Earl D, Escobar L, Eswara M, Ezquieta B, Frayling IM, Frydman M, Gardner K, Gripp KW, Hernández-Chico C, Heyman K, Ibrahim J, Janssens S, Keena BA, Llano-Rivas I, Leppig K, McDonald M, Misra VK, Mulbury J, Narayanan V, Orenstein N, Galvin-Parton P, Pedro H, Pivnick EK, Powell CM, Randolph L, Raskin S, Rosell J, Rubin K, Seashore M, Schaaf CP, Scheuerle A, Schultz M, Schory E, Schnur R, Siqueland E, Tkachuk A, Tongsaad J, Upadhyaya M, Verma IC, Wallace S, Williams C, Zackai E, Zonana J, Lazaro C, Claes K, Korf B, Martin Y, Legius E, Messiaen L. High Incidence of Noonan Syndrome Features Including Short Stature and Pulmonic Stenosis in Patients carrying *NF1* Missense Mutations Affecting p.Arg1809: Genotype-Phenotype Correlation. *Hum Mutat* 2015;36:1052–63.
- Upadhyaya M, Huson SM, Davies M, Thomas N, Chuzhanova N, Giovannini S, Evans DG, Howard E, Kerr B, Griffiths S, Consoli C, Side L, Adams D, Pierpont M, Hachen R, Barnicoat A, Li H, Wallace P, Van Biervliet JP, Stevenson D, Viskochil D, Baralle D, Haan E, Riccardi V, Turpenny P, Lazaro C, Messiaen L. An absence of cutaneous neurofibromas associated with a 3-bp inframe deletion in exon 17 of the *NF1* gene (c.2970-2972 delAAT): evidence of a clinically significant NF1 genotype-phenotype correlation. *Am J Hum Genet* 2007;80:140–51.
- Pasmant E, Sabbagh A, Spurlock G, Laurendeau I, Grillo E, Hamel MJ, Martin L, Barbarot S, Leheup B, Rodriguez D, Lacombe D, Dollfus H, Pasquier L, Isidor B, Ferkal S, Soulier J, Sanson M, Dieux-Coeslier A, Bieche I, Parfait B, Vidaud M, Wolkenstein P, Upadhyaya M. D. Vidaud, and N.F.F.N. members of the, *NF1* microdeletions in neurofibromatosis type 1: from genotype to phenotype. *Hum Mutat* 2010;31:E1506–18.

- 21 Ben-Shachar S, Constantini S, Hallevi H, Sach EK, Upadhyaya M, Evans GD, Huson SM. Increased rate of missense/in-frame mutations in individuals with NF1-related pulmonary stenosis: a novel genotype-phenotype correlation. *Eur J Hum Genet* 2013;21:535–9.
- 22 Koczkowska M, Chen Y, Callens T, Gomes A, Sharp A, Johnson S, Hsiao MC, Chen Z, Balasubramanian M, Barnett CP, Becker TA, Ben-Shachar S, Bertola DR, Blakeley JO, Burkitt-Wright EMM, Callaway A, Crenshaw M, Cunha KS, Cunningham M, D'Agostino MD, Dahan K, De Luca A, Destrée A, Dhamija R, Eoli M, Evans DGR, Galvin-Parton P, George-Abraham JK, Gripp KW, Guevara-Campos J, Hanchard NA, Hernández-Chico C, Immken L, Janssens S, Jones KJ, Keena BA, Kochhar A, Liebelt J, Martir-Negron A, Mahoney MJ, Maystadt I, McDougall C, McEntagart M, Mendelsohn N, Miller DT, Mortier G, Morton J, Pappas J, Plotkin SR, Pond D, Rosenbaum K, Rubin K, Russell L, Rutledge LS, Saletti V, Schonberg R, Schreiber A, Seidel M, Siqveland E, Stockton DW, Trevisson E, Ullrich NJ, Upadhyaya M, van Minkelen R, Verhelst H, Wallace MR, Yap YS, Zackai E, Zonana J, Zurcher V, Claes K, Martin Y, Korf BR, Legius E, Messiaen LM. GenoType-phenotype correlation in NF1: evidence for a more severe phenotype associated with missense mutations affecting *NF1* Codons 844-848. *Am J Hum Genet* 2018;102:69–87.
- 23 Kluwe L, Tatagiba M, Fünsterer C, Mautner VF. *NF1* mutations and clinical spectrum in patients with spinal neurofibromas. *J Med Genet* 2003;40:368–71.
- 24 Sharif S, Upadhyaya M, Ferner R, Majounie E, Shenton A, Baser M, Thakker N, Evans DG. A molecular analysis of individuals with neurofibromatosis type 1 (NF1) and optic pathway gliomas (OPGs), and an assessment of genotype-phenotype correlations. *J Med Genet* 2011;48:256–60.
- 25 Philpott C, Tovell H, Frayling IM, Cooper DN, Upadhyaya M. The *NF1* somatic mutational landscape in sporadic human cancers. *Hum Genomics* 2017;11:13.
- 26 Upadhyaya M, Kluwe L, Spurlock G, Monem B, Majounie E, Mantripragada K, Ruggieri M, Chuzhanova N, Evans DG, Ferner R, Thomas N, Guha A, Mautner V. Germline and somatic *NF1* gene mutation spectrum in NF1-associated malignant peripheral nerve sheath tumors (MPNSTs). *Hum Mutat* 2008;29:74–82.
- 27 Upadhyaya M, Han S, Consoli C, Majounie E, Horan M, Thomas NS, Potts C, Griffiths S, Ruggieri M, von Deimling A, Cooper DN. Characterization of the somatic mutational spectrum of the neurofibromatosis type 1 (*NF1*) gene in neurofibromatosis patients with benign and malignant tumors. *Hum Mutat* 2004;23:134–46.
- 28 van Minkelen R, van Bever Y, Kromosoeto JN, Withagen-Hermans CJ, Nieuwlaet A, Halley DJ, van den Ouweland AM. A clinical and genetic overview of 18 years neurofibromatosis type 1 molecular diagnostics in the Netherlands. *Clin Genet* 2014;85:318–27.
- 29 Messiaen LM, Wimmer K. *NF1 Mutational Spectrum, in Neurofibromatoses*: Karger, 2008:63–77.
- 30 Antoniou A, Pharoah PD, Narod S, Risch HA, Eyfjord JE, Hopper JL, Loman N, Olsson H, Johannsson O, Borg A, Pasini B, Radice P, Manoukian S, Eccles DM, Tang N, Olah E, Anton-Culver H, Warner E, Lubinski J, Gronwald J, Gorski B, Tulinius H, Thorlacius S, Eerola H, Nevanlinna H, Syrjäkoski K, Kallioniemi OP, Thompson D, Evans C, Peto J, Lalloo F, Evans DG, Easton DF. Average risks of breast and ovarian cancer associated with *BRCA1* or *BRCA2* mutations detected in case Series unselected for family history: a combined analysis of 22 studies. *Am J Hum Genet* 2003;72:1117–30.
- 31 Chompret A, Brugères L, Ronsin M, Gardes M, Dessarps-Freichy F, Abel A, Hua D, Ligot L, Dondon MG, Bressac-de Paillerets B, Frébourg T, Lemerle J, Bonaiti-Pellié C, Feunteun J. *P53* germline mutations in childhood cancers and cancer risk for carrier individuals. *Br J Cancer* 2000;82:1932–7.
- 32 Cancer Research UK. Breast Cancer (C50), Average Number of New Cases per Year and Age-Specific Incidence Rates, Females, UK, 2009-2011. 2015 (cited Sep 2015).
- 33 Benjamini Y, Hochberg RB. Controlling the false discovery rate: a practical and powerful approach to multiple testing. *Journal of the Royal Statistical Society B* 1995;57:289–300.
- 34 Schweder T, Spjøtvoll E. Plots of *P*-values to evaluate many tests simultaneously. *Biometrika* 1982;69:493–502.
- 35 Whitworth J, Skytte AB, Sunde L, Lim DH, Arends MJ, Happerfield L, Frayling IM, van Minkelen R, Woodward ER, Tischkowitz MD, Maher ER. Multilocus inherited neoplasia alleles syndrome: a case series and review. *JAMA Oncol* 2016;2:373–9.
- 36 Evans DG, Shenton A, Woodward E, Lalloo F, Howell A, Maher ER. Penetrance estimates for *BRCA1* and *BRCA2* based on genetic testing in a Clinical Cancer Genetics service setting: risks of breast/ovarian cancer quoted should reflect the cancer burden in the family. *BMC Cancer* 2008;8:155.
- 37 Zöller ME, Rembeck B, Odén A, Samuelsson M, Angervall L. Malignant and benign tumors in patients with neurofibromatosis type 1 in a defined Swedish population. *Cancer* 1997;79:2125–31.
- 38 Benjamini Y, Hochberg Y. Controlling the false discovery rate: a practical and powerful approach to multiple testing. *Journal of the Royal Statistical Society B* 1995;57:289–300.
- 39 McPherson JR, Ong CK, Ng CC, Rajasegaran V, Heng HL, Yu WS, Tan BK, Madhukumar P, Teo MC, Ngeow J, Thihe AA, Rozen SG, Tan PH, Lee AS, Teh BT, Yap YS. Whole-exome sequencing of breast cancer, malignant peripheral nerve sheath tumor and neurofibroma from a patient with neurofibromatosis type 1. *Cancer Med* 2015;4:1871–8.
- 40 Wang X, Teer JK, Tousignant RN, Levin AM, Boulware D, Chitale DA, Shaw BM, Chen Z, Zhang Y, Blakeley JO, Acosta MT, Messiaen LM, Korf BR, Tainsky MA. Breast cancer risk and germline genomic profiling of women with neurofibromatosis type 1 who developed breast cancer. *Genes Chromosomes Cancer* 2018;57.
- 41 Evans DG, Baser ME, McGaughran J, Sharif S, Howard E, Moran A. Malignant peripheral nerve sheath tumours in neurofibromatosis 1. *J Med Genet* 2002;39:311–4.
- 42 Evans DG, Huson SM, Birch JM. Malignant peripheral nerve sheath tumours in inherited disease. *Clin Sarcoma Res* 2012;2:17.
- 43 Uusitalo E, Rantanen M, Kallionpää RA, Pöyhönen M, Leppävirta J, Ylä-Outinen H, Riccardi VM, Pukkala E, Pitkääniemi J, Peltonen S, Peltonen J. Distinctive Cancer Associations in Patients With Neurofibromatosis Type 1. *J Clin Oncol* 2016;34:1978–86.
- 44 Mautner VF, Kluwe L, Friedrich RE, Roehl AC, Bammert S, Högel J, Spöri H, Cooper DN, Kehrer-Sawatzki H. Clinical characterisation of 29 neurofibromatosis type-1 patients with molecularly ascertained 1.4 Mb type-1 *NF1* deletions. *J Med Genet* 2010;47:623–30.
- 45 Upadhyaya M, Spurlock G, Majounie E, Griffiths S, Forrester N, Baser M, Huson SM, Gareth Evans D, Ferner R. The heterogeneous nature of germline mutations in NF1 patients with malignant peripheral nerve sheath tumours (MPNSTs). *Hum Mutat* 2006;27:716.
- 46 Nagy E, Maquat LE. A rule for termination-codon position within intron-containing genes: when nonsense affects RNA abundance. *Trends Biochem Sci* 1998;23:198–9.
- 47 Rivas MA, Pirinen M, Conrad DF, Lek M, Tsang EK, Karczewski KJ, Maller JB, Kukurba KR, DeLuca DS, Fromer M, Ferreira PG, Smith KS, Zhang R, Zhao F, Banks E, Poplin R, Ruderfer DM, Purcell SM, Tukiainen T, Minikel EV, Stenson PD, Cooper DN, Huang KH, Sullivan TJ, Nedzel J, Bustamante CD, Li JB, Daly MJ, Guigo R, Donnelly P, Ardlie K, Sammeth M, Dermizakis ET, McCarthy MI, Montgomery SB, Lappalainen T, MacArthur DG. GTEx Consortium. Human genomics. Effect of predicted protein-truncating genetic variants on the human transcriptome. *Science* 2015;348:666–9.
- 48 D'Angelo I, Welti S, Bonneau F, Scheffzek K. A novel bipartite phospholipid-binding module in the neurofibromatosis type 1 protein. *EMBO Rep* 2006;7:174–9.
- 49 Mellert K, Lechner S, Lüdeke M, Lamlam M, Möller P, Kemkemer R, Scheffzek K, Kaufmann D. Restoring functional neurofibromin by protein transduction. *Sci Rep* 2018;8:6171.
- 50 Yap YS, Munusamy P, Lim C, Chan CHT, Prawira A, Loke SY, Lim SH, Ong KW, Yong WS, Ng SBH, Tan IBH, Callen DF, Lim JCT, Thihe AA, Tan PH, Lee ASG. Breast cancer in women with neurofibromatosis type 1 (NF1): a comprehensive case series with molecular insights into its aggressive phenotype. *Breast Cancer Res Treat* 2018;719–35.
- 51 Kolligs FT, Bommer G, Göke B. Wnt/beta-catenin/tcf signaling: a critical pathway in gastrointestinal tumorigenesis. *Digestion* 2002;66:131–44.
- 52 Lamlum H, Ilyas M, Rowan A, Clark S, Johnson V, Bell J, Frayling I, Efstathiou J, Pack K, Payne S, Roylance R, Gorman P, Sheer D, Neale K, Phillips R, Talbot I, Bodmer W, Tomlinson I. The type of somatic mutation at APC in familial adenomatous polyposis is determined by the site of the germline mutation: a new facet to Knudson's 'two-hit' hypothesis. *Nat Med* 1999;5:1071–5.
- 53 Cancer Genome Atlas Network. Comprehensive molecular portraits of human breast tumours. *Nature* 2012;490:61–70.
- 54 Genomics, c.f.c. Breast cancer; NF1; ERBB2. 2018. [http://www.cbioportal.org/index.do?session\\_id=5a1cd8de498eb8b3d560cddf&show\\_samples=false&clinicallist=CANCER\\_STUDY&\(cited 19 Apr 2018\)](http://www.cbioportal.org/index.do?session_id=5a1cd8de498eb8b3d560cddf&show_samples=false&clinicallist=CANCER_STUDY&(cited%2019%20Apr%202018)).
- 55 De Raedt T, Beert E, Pasmant E, Luscan A, Brems H, Ortonne N, Helin K, Hornick JL, Mautner V, Kehrer-Sawatzki H, Clapp W, Bradner J, Vidaud M, Upadhyaya M, Legius E, Cichowski K. PRC2 loss amplifies Ras-driven transcription and confers sensitivity to BRD4-based therapies. *Nature* 2014;514:247–51.
- 56 Ceccaroni M, Genuardi M, Legge F, Lucci-Cordisco E, Carrara S, D'Amico F, Greggi S, Scambia G. *BRCA1*-related malignancies in a family presenting with von Recklinghausen's disease. *Gynecol Oncol* 2002;86:375–8.
- 57 Powis Z, LaDuca H, Bergner A, et al. The Results are in: Who is Testing Positive for NF1 on Hereditary Cancer Multi-Gene Panels? NSGC Conference. 2017. [https://www.ambrygen.com/file/view/1219/Powis%20Z\\_%20NSGC%202017\\_The%20Results%20are%20in%20Who%20is%20Testing%20Positive%20for%20NF1%20on%20Hereditary%20Cancer%20Multi-Gene%20Panels\\_Poster.pptx.pdf](https://www.ambrygen.com/file/view/1219/Powis%20Z_%20NSGC%202017_The%20Results%20are%20in%20Who%20is%20Testing%20Positive%20for%20NF1%20on%20Hereditary%20Cancer%20Multi-Gene%20Panels_Poster.pptx.pdf)